

SEMINARS

WORKSHOPS AND CORPORATE EVENTS



CHÂTEAU DE SAINT-MARTORY





CHÂTEAU DE SAINT-MARTORY

Located southwest of Toulouse, the Renaissance Castle and its 19th-century agricultural buildings welcome you for seminars, board meetings, team-building activities, training sessions, and product launches in a truly exclusive setting.

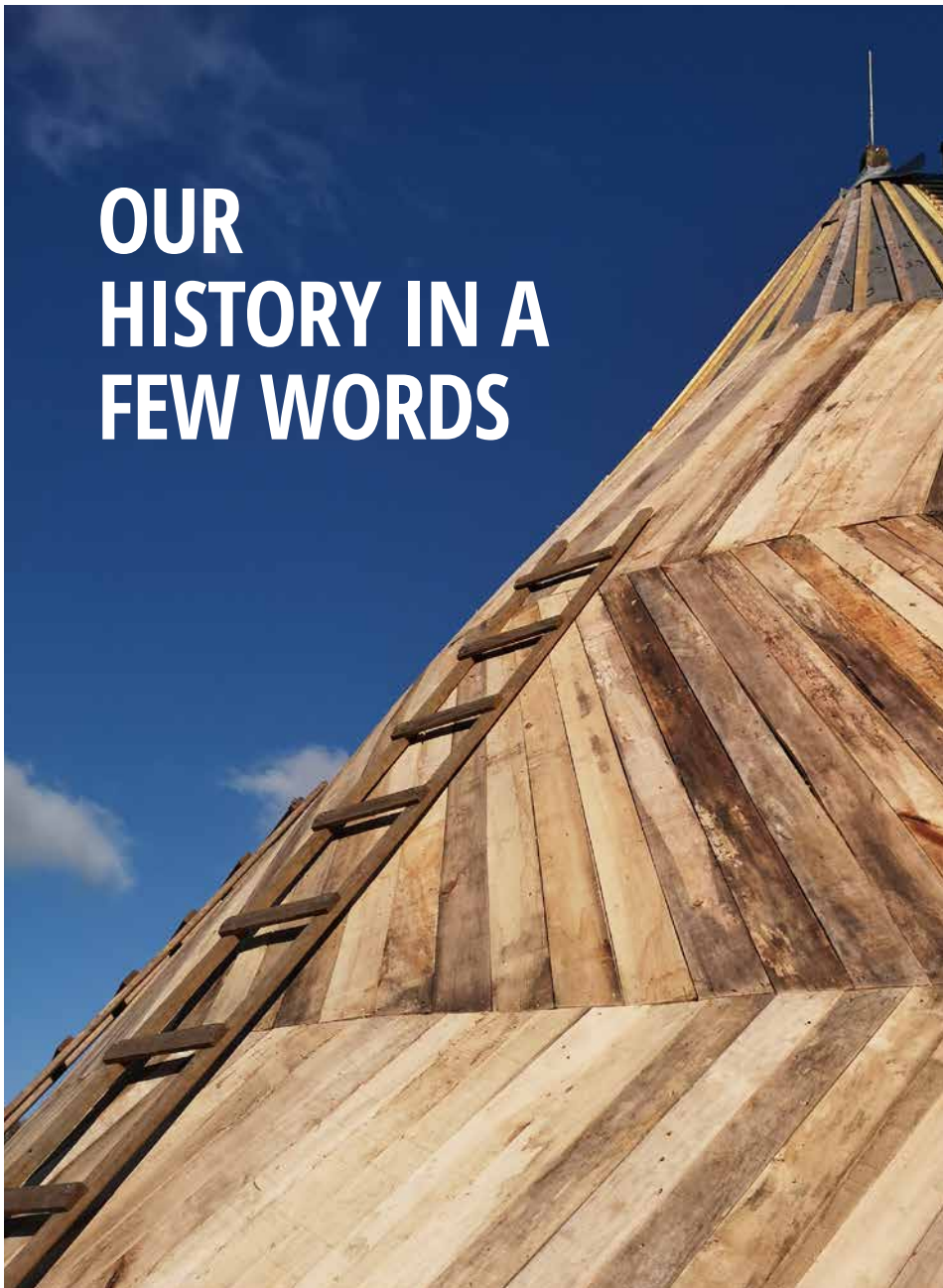
Thanks to the size of its estate, the property and its numerous indoor and outdoor spaces can accommodate groups ranging from 10 to 150 people.

Regardless of the number of participants, our different spaces will be adapted to your needs. They all offer the advantage of great discretion since the property is always rented exclusively.



**AN
EXCEPTIONAL
VENUE**

OUR HISTORY IN A FEW WORDS



The Montpezat family, Lords of Tajan and Saint-Martory, built their new residence by the Garonne in 1515 to better control the commercial trade going up and down river.



Shortly after the Revolution, the Prince de Berghes acquired the Chateau and undertook its transformation in the highly popular neo-Gothic style of the time.

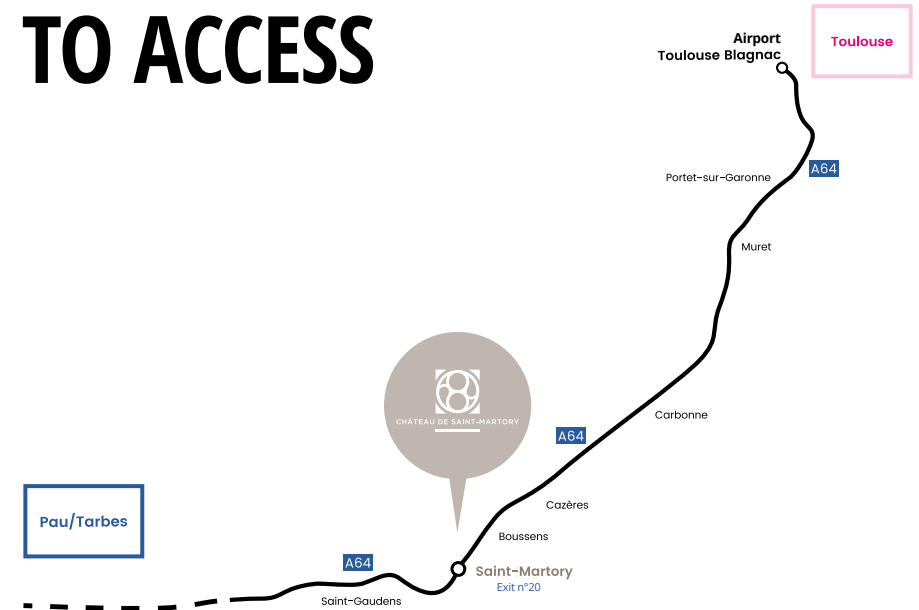
The estate then changed hands several times before being purchased in 1991 by the father of the present owner.

Since the year 2000, the current owner has continuously renovated and embellished the castle itself, its gardens and all the rural buildings present on the 40-hectare property.

Today, the Castle opens its doors to clients from around the world for vacations, weddings, seminars, and cycling stays.



A LOCATION THAT IS EASY TO ACCESS



Chateau de Saint-Martory is located halfway between Toulouse and Tarbes, a 45-minute drive via the A64. The highway exit is 3 kilometers from the property.

**AUTOROUTE A64
EXIT n°20**

**PAU 128 km
TARBES 85 km
TOULOUSE 70 km**

An aerial photograph showing a large, light-colored stone castle with a prominent round tower and a dark blue roof. The castle is situated on a grassy bank next to a wide, shallow river. The river flows through a dense forest of green trees. In the background, a small village with several houses and a road is visible. The overall scene is lush and natural.

IN THE HEART OF NATURE

The property spans over 40 hectares, mostly covered by woods and crisscrossed by beautiful paths and inhabited by wild animals.

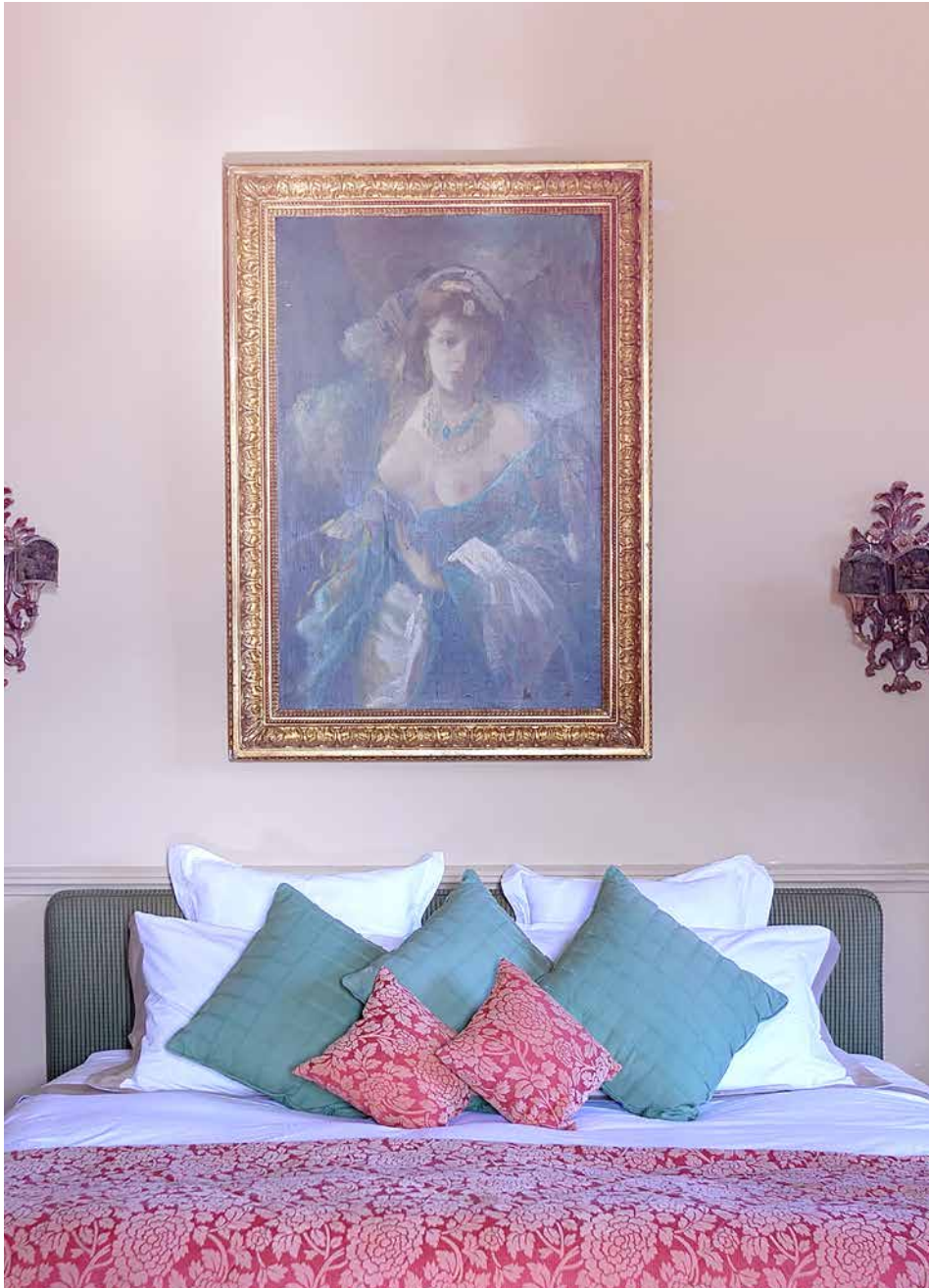
The Garonne flowing at the foot of the castle and the breathtaking view of the central Pyrenees complete the picture, making Saint-Martory a privileged destination to reconnect with nature.

The gardens alone represent several hectares, making all kinds of activities easily achievable on-site.

A free parking lot with more than 50 spaces is available to clients.

THE CASTLE





12 SUPERB ROOMS



Seven suites are available at the Castle, supplemented by four rooms and three bathrooms at the Chateau's Farmhouse, as well as the Gatehouse, a completely independent house which offers one suite.

Six additional suites will be available from spring 2024 in the «Relais du Chateau,» located a 5-minute walk in the village, **bringing the total capacity of the property to 18 rooms.**

Thanks to quality accommodations nearby, we frequently host groups of 20 to 30 people for seminars and organize a shuttle service between different the venues.

All rooms have been personally decorated by the owner over the years with discoveries from flea markets, fairs, antique shops, and auctions.

Passionate about beautiful objects, art and furniture, he is always searching for new objects and the room decoration is in constant evolution.

TIMELESS DECORATION





INVITATION TO TRAVEL

Over time, elements of modern decoration and contemporary art have found their way among furniture dating back to the Louis XIII era and the oldest paintings.

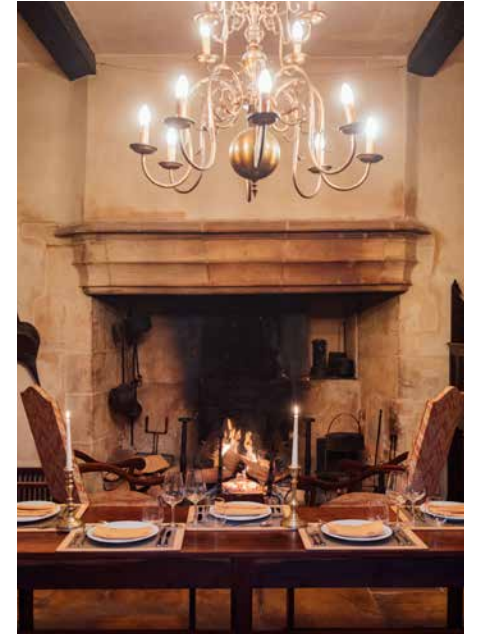
Today, the mix of styles is unique. The so-called Cathedral room, mixing harmoniously Brazilian furniture from the 50s and 60s and a beam structure going back five centuries, is a perfect example of the eclectic mix that characterizes the Chateau and the property in general.





✂ 40 m² | ❄ 24 pers. | 🍷 30 pers.

FIVE LIVING SPACES



The Castle has five distinct lounges: the Guards Room, the Red Lounge, the Yellow Lounge, the Office, and the Billiard room.

The stones of the Guards Room are polished and hollowed by the passage of men. This space is as it was in the Renaissance, as if time had stood still. It remains to this day the true heart of the Castle.

Its atmosphere is simple and warm, like its gigantic fireplace that kept the guards warm and the maids cooking and that remains lit all winter. It alone represents an invitation to conviviality and reconnection with the simple pleasures of life.



THE YELLOW LOUNGE



The Yellow Lounge is the main meeting room of the castle.

It can accommodate about 40 people in theater configuration and about twenty in a U-shape.

It is also a sublime place for exceptional meals.



The Red Lounge is the ideal place for a cocktail after a long day of work. Its wood panels reflect the influence of Viollet le Duc during the renovation work undertaken in the mid-19th century by the Prince de Berghes, whose coat of arms is visible on the fireplace.

The Office often serves as a secluded workspace for a video conference or a shared TV room for a match or other important event. This is where the fiber optic line enters the building with very high speed connection.

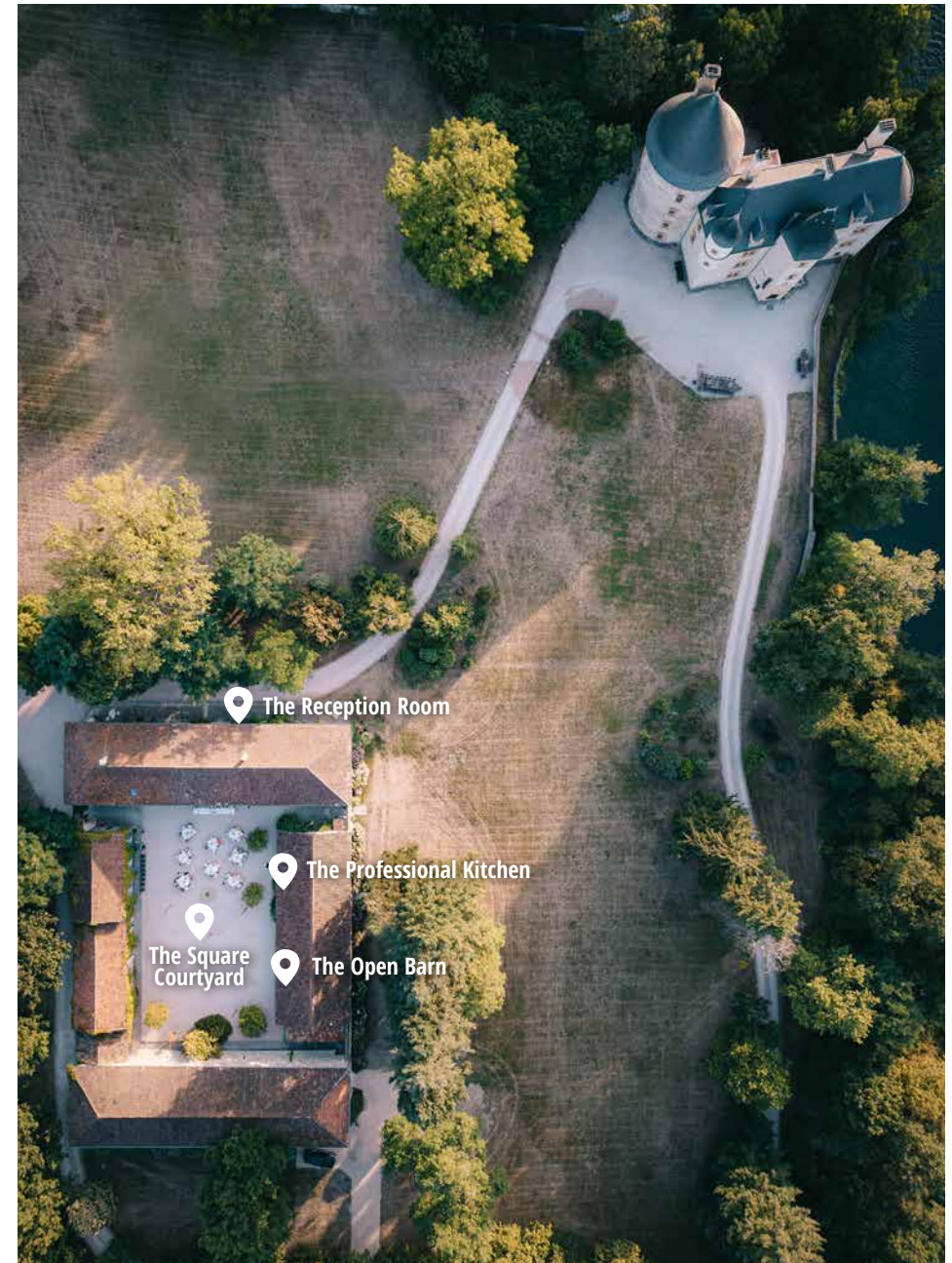
Finally, the Billiard room, located under the attic, frequently witnesses joyful evenings, usually around a good glass of Armagnac.

A long, two-story stone building with a textured, light-colored facade. The building features several windows with green shutters and a central entrance. A gravel driveway runs alongside the building, and a large tree is visible on the left. The text "OUR EVENT SPACES" is overlaid on the left side of the image.

OUR EVENT SPACES

THE CHATEAU FARMHOUSE

The Chateau's Farmhouse is made of former agricultural buildings dating from the 1850s. These buildings are located 100 meters from the Castle, on the other side of the main lawn. Here you will find the main Reception Room of the property, a professional kitchen, a dining room suitable for larger groups, as well as the garage space dedicated to cycling.



THE RECEPTION ROOM



The Reception Room is very bright and offers magnificent views of the park and the Castle. This room was created by combining the stables and an adjoining storage room. The unique features of the stables have been preserved, its old mangers redistributed all around the room, the floor, and the walls in concrete redone identically.

The Reception Room is ideal for plenary meetings with a capacity of 150 people in theater style.



THE SQUARE COURTYARD

The Farmhouse's courtyard measures approximately 700 m² and can, therefore, accommodate very large groups.

It is around this courtyard that the Reception Room, the facilities, the Open Barn, and the professional kitchen are articulated. The installation of tents is possible.



THE OPEN BARN

The Farmhouse's Open Barn comfortably accommodates guests after a morning work session in the Reception Room or at the Yellow Lounge of the Castle. It is an authentic rural space bathed in natural light.

It can be used open in summer and closed in winter thanks to a set of transparent tarps that allow it to be easily heated.



THE PROFESSIONAL KITCHEN

Since the year 2020, we offer a homemade catering service thanks to our private chef who adapts menus to the requirements and needs of each client, whether it is meals for small committees, traditional wedding parties, or buffets for groups of all sizes.

TEAM BUILDING

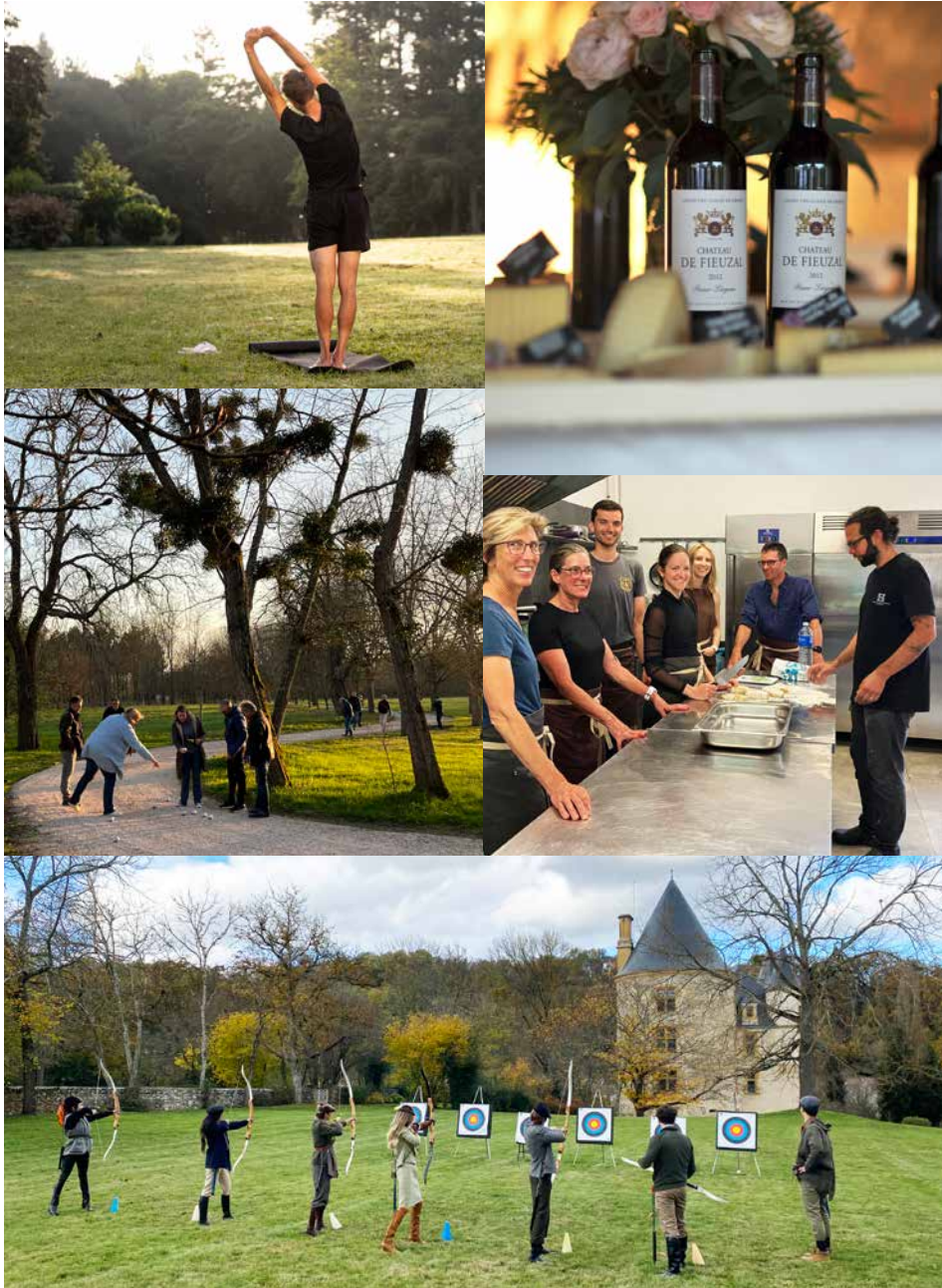


A PLACE CONDUCTIVE TO TEAM COHESION

The Castle is a lifestyle destination. We not only host our clients but also actively contribute to team cohesion and visitor well-being. We emphasize the art of living and conviviality by blending traditions, typical aspects of our Region and a great openness to the world and modernity.

Over the years, we have carefully selected activities - games, sports, well-being, and gastronomy - that are achievable by the widest possible audience and that reflect the image and values of Chateau de Saint-Martory. The size of the property and its buildings allow us to offer a large number of these activities on-site.





ACTIVITIES

ARCHERY

12 pers. max.

🕒 1H
/ SESSION

Allowing our clients to practice archery seemed obvious at Chateau de Saint-Martory. Anyone can practice this sport even without prior training. The activity is supervised by a professional archer.

PÉTANQUE

30 pers. max.

🕒 1H
/ SESSION

Pétanque is perhaps France's favorite « sport » and it was important for us to honor it. Games take place in the castle's alleys or on the forecourt, often combined with an aperitif. We have also developed a new concept, the «Pétanque Champagne Party®.»

DARTS

30 pers. max.

🕒 1H
/ SESSION

Darts are an essential activity on the other side of the Channel. At the castle, they are often practiced in addition to other activities when we host groups of 50 people or more. It is also the backup plan for all other outdoor activities in case of rain.

WELL-BEING

18 pers. max.

🕒 1H - 2H

Our Region attracts many Yoga enthusiasts due to the amazing natural environment it offers. We now organize Yoga sessions and sound journeys with Tibetan bowls at the Chateau. We can propose these activities together or separately.

GASTRONOMY

8 pers. max.

🕒 2/3H

Our private chef Otavio offers tailor-made cooking classes and adapts to your desires. This trendy workshop takes place in our catering space for groups of up to 8 people. It is followed by a tasting of the dishes prepared on-site.



ACTIVITIES (CONT'D)

CYCLING

12 pers. max.

🕒 2/3H

We regularly welcome cyclists from around the world who come to challenge the mythical climbs of the Tour de France and host the professional women's team Cynisca Cycling. We believe in the virtues of cycling to strengthen the team spirit. Departing from the Castle, we also offer electric-assist mountain bike rides on the nearby hills. The view of the Pyrenees is breathtaking.

WHITEWATER

🕒 1/2 DAY

The descent of the Garonne by raft, canoe, or kayak is also extremely conducive to team cohesion. We organize these activities with the Antignac Rafting team, whose base is located 40 minutes from the Castle.

TREK

12 pers. max.
for one guide

🕒 1/2 DAY

A hike in the middle mountains is an unforgettable moment. We organize this activity in partnership with certified guides who will show you unique landscapes in the valleys of Haut Couserans in Ariège, the Ossau valley, or the Aure valley.

ORIENTEERING

🕒 2H

Our specialized partner, Olivier Thomas, has mapped out the 40 hectares of the property. The goal of the game is to find the targets spread around a wide area as quickly as possible, in a specific order, using a map and possibly a compass. Olivier offers several levels of orienteering races, ranging from a simple treasure hunt to a real physical challenge by expanding the playing area and toughening the conditions.



INDICATIVE RATES

STUDY DAY

Starting from €75 excluding tax per person with:

- Welcome coffee
- Buffet/cocktail lunch
- 2 gourmet breaks

SEMINAR - 1 DAY & NIGHT *

Starting from €315 excluding tax per person, with:

- Welcome aperitif
- Dinner (*private chef with wines or cheese & wines meal*)
- Room with breakfast
- Seated lunch (*private chef without wines*)
- Gourmet break

SEMINAR - 2 DAYS / & NIGHT *

Starting from €415 excluding tax per person, with:

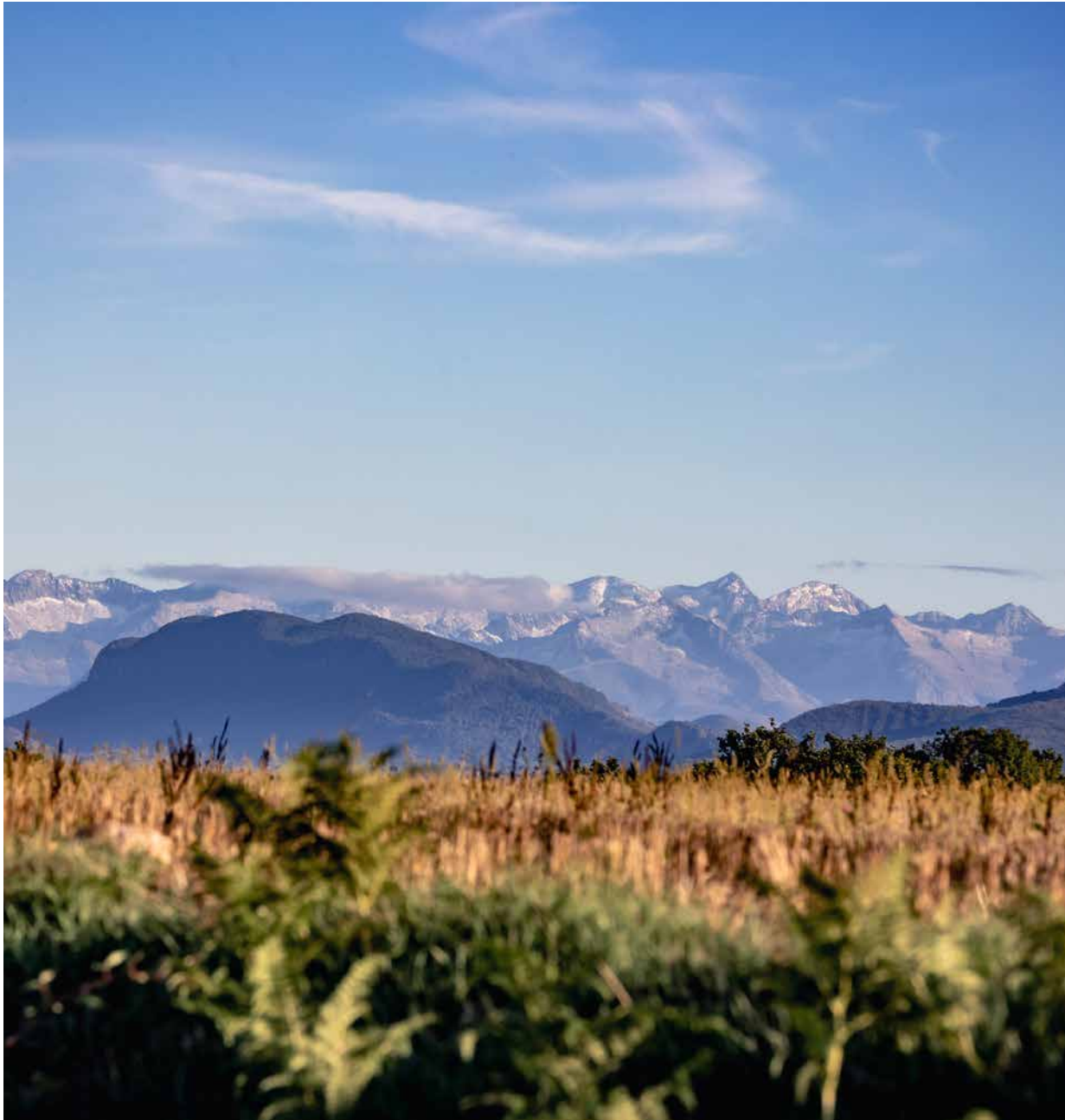
DAY 1

- Welcome coffee
- Seated lunch (*private chef, without wines*)
- Gourmet break
- Aperitif
- Dinner (*private chef with wines or cheese & wines meal*)
- Overnight stay

DAY 2

- Breakfast
- Seated lunch (*private chef, without wines*)
- Gourmet break

** 12 rooms on the property. Additional people can be accommodated at the Relais du Chateau or in nearby guest rooms with a shuttle service.*



WE LOOK FORWARD TO WELCOMING YOU

Feel free to call us for any questions, a custom quote, or to book your event.

CONTACT

info@saintmartory.com

www.saintmartory.com

Tel. 05 61 87 68 59